



say not *sweet* Anne.com



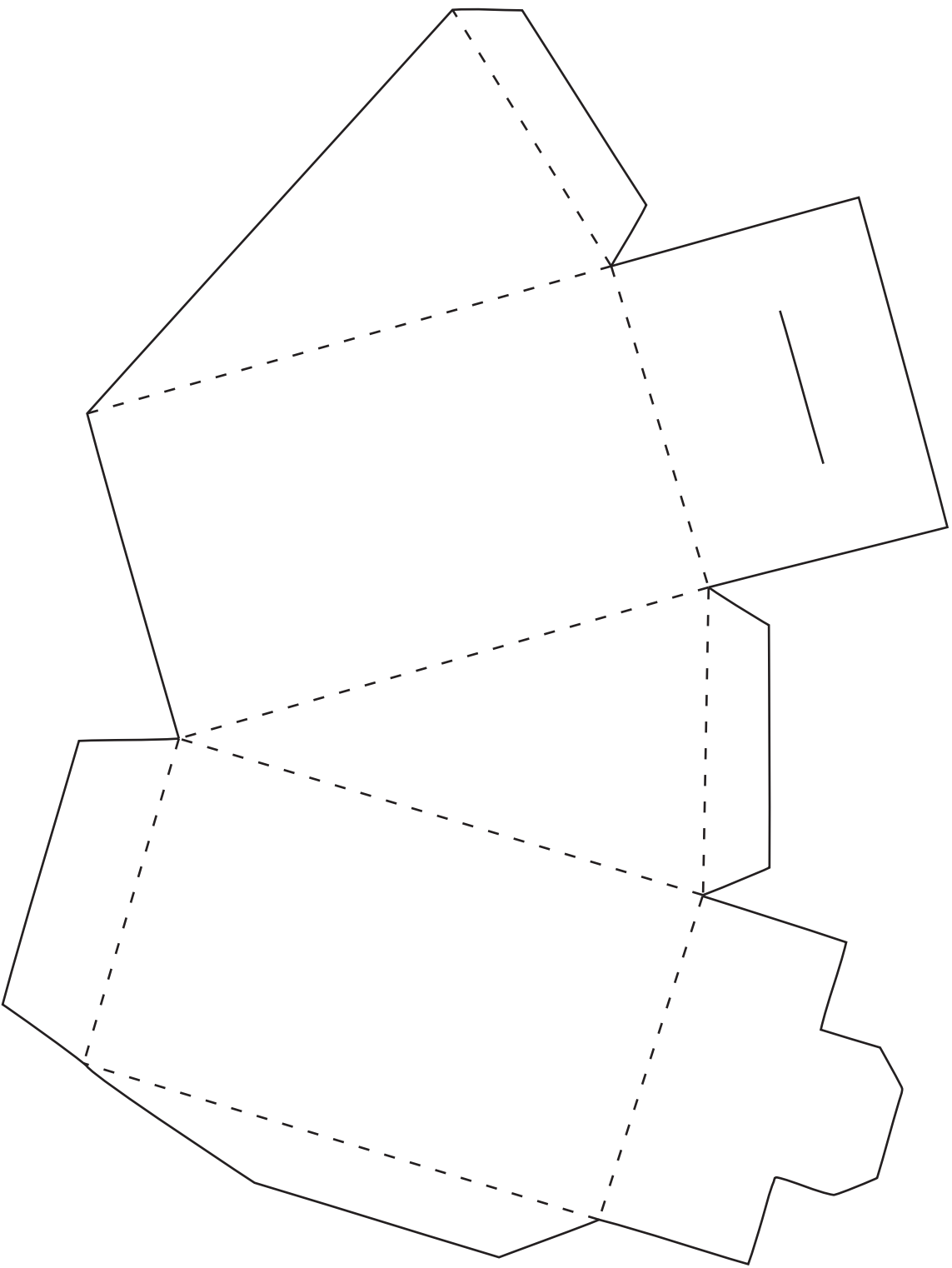
Paper Advent Calendar

INSTRUCTIONS:

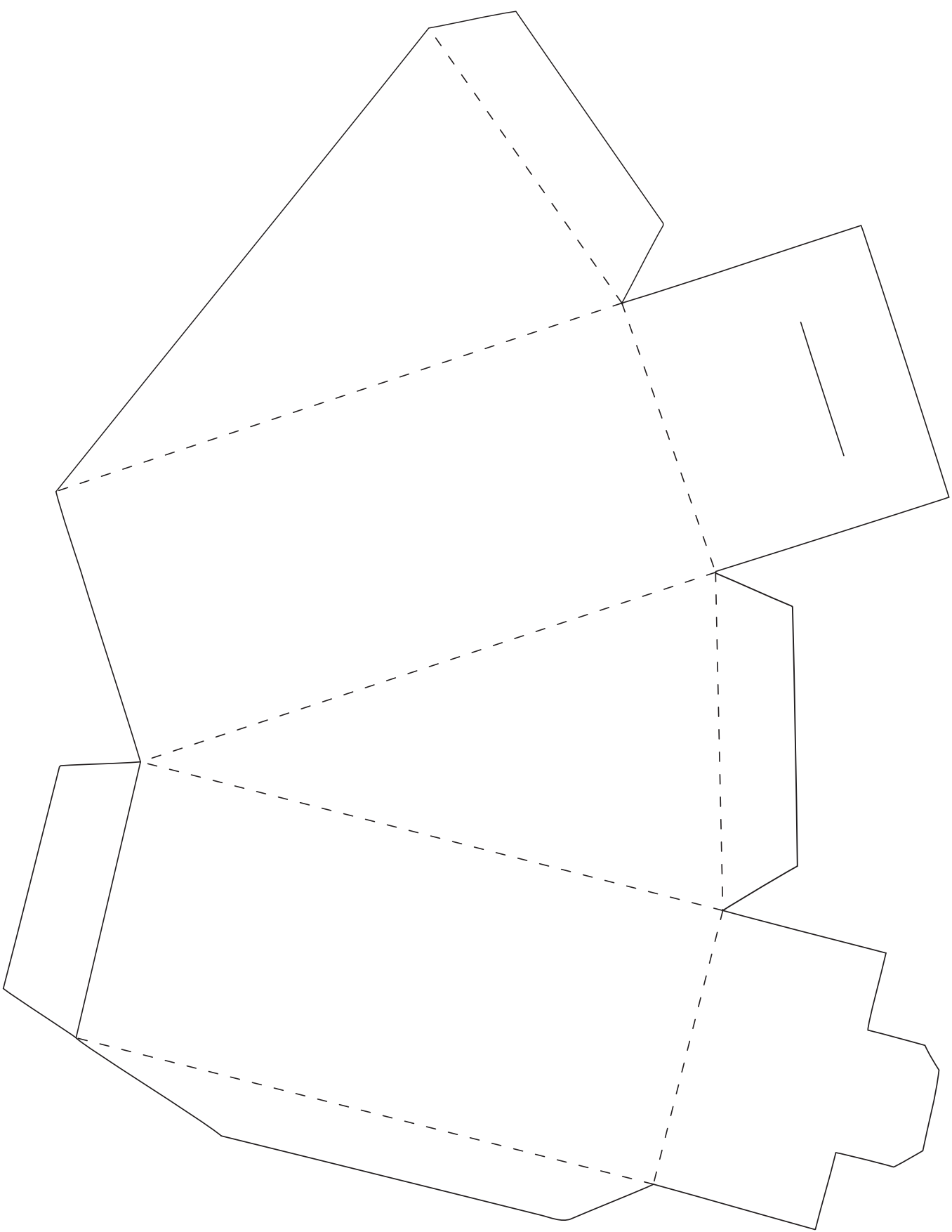
- 1.) Print out the template on a heavy card stock.
- 2.) Cut out the design along the solid lines.
- 3.) Score and fold along the dotted lines.
- 4.) Use a dab of glue, or a piece of double sided tape to adhere the bottom and side flaps, being careful not to glue the box closed.
- 5.) The box will hold itself closed by hooking the top left and right flaps over the top front and back flaps.



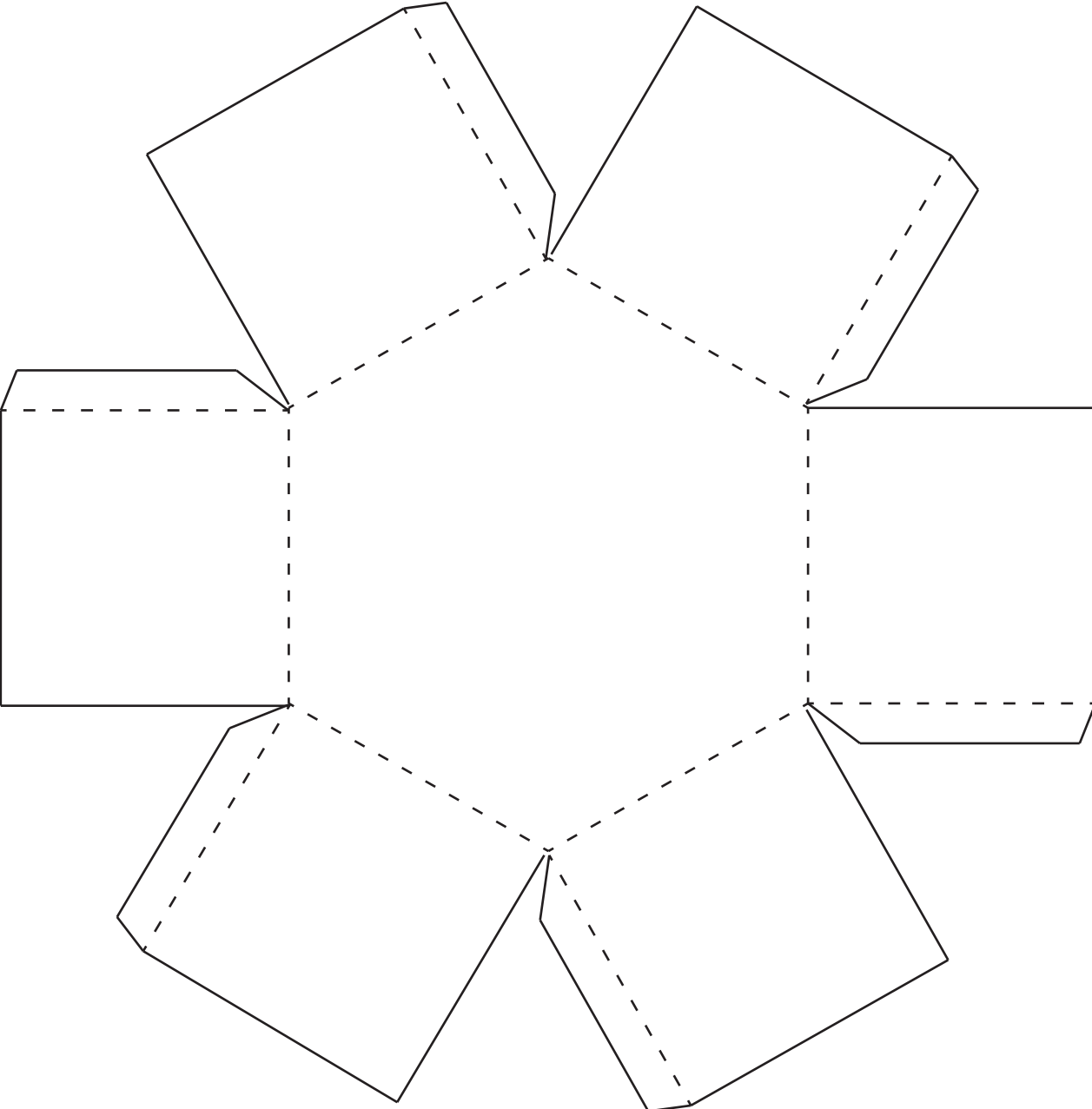
Second Tier Wedge (print 1)

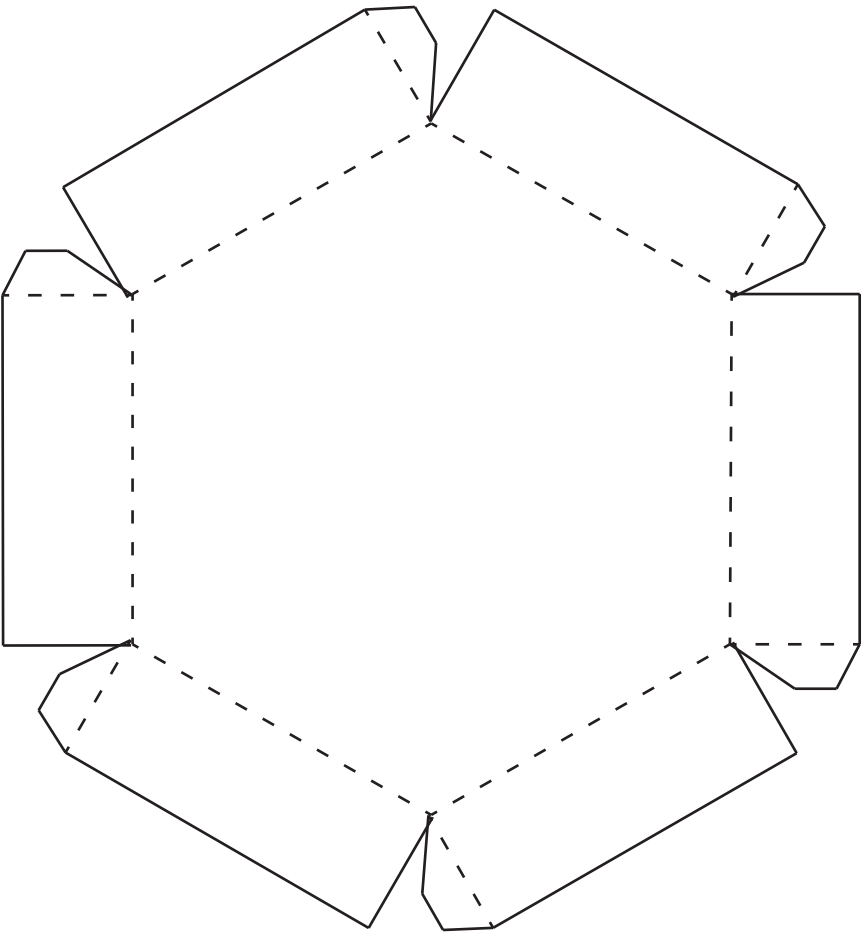


Bottom Tier Wedge (print 1)

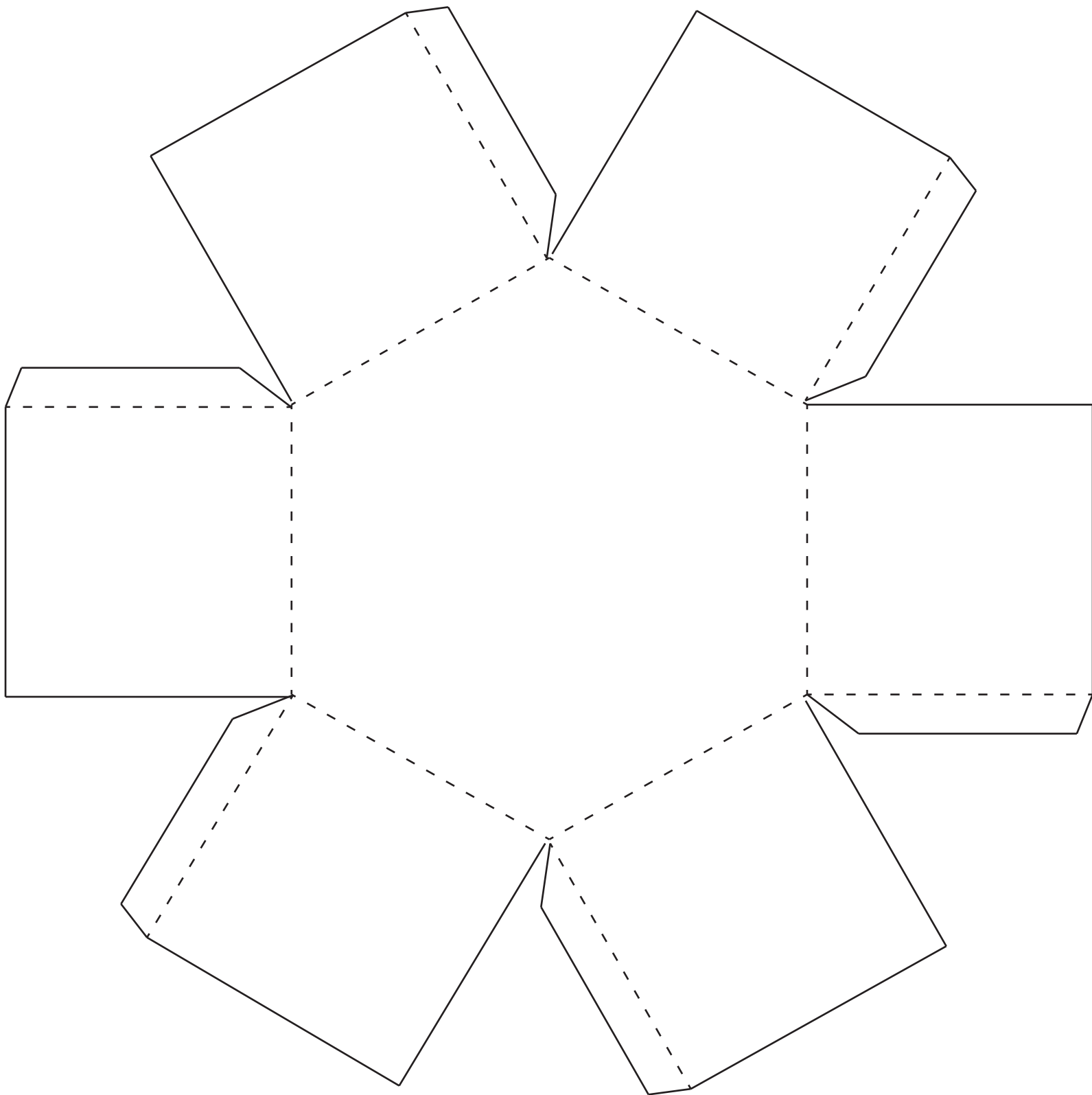


Small Octagon Box Bottom

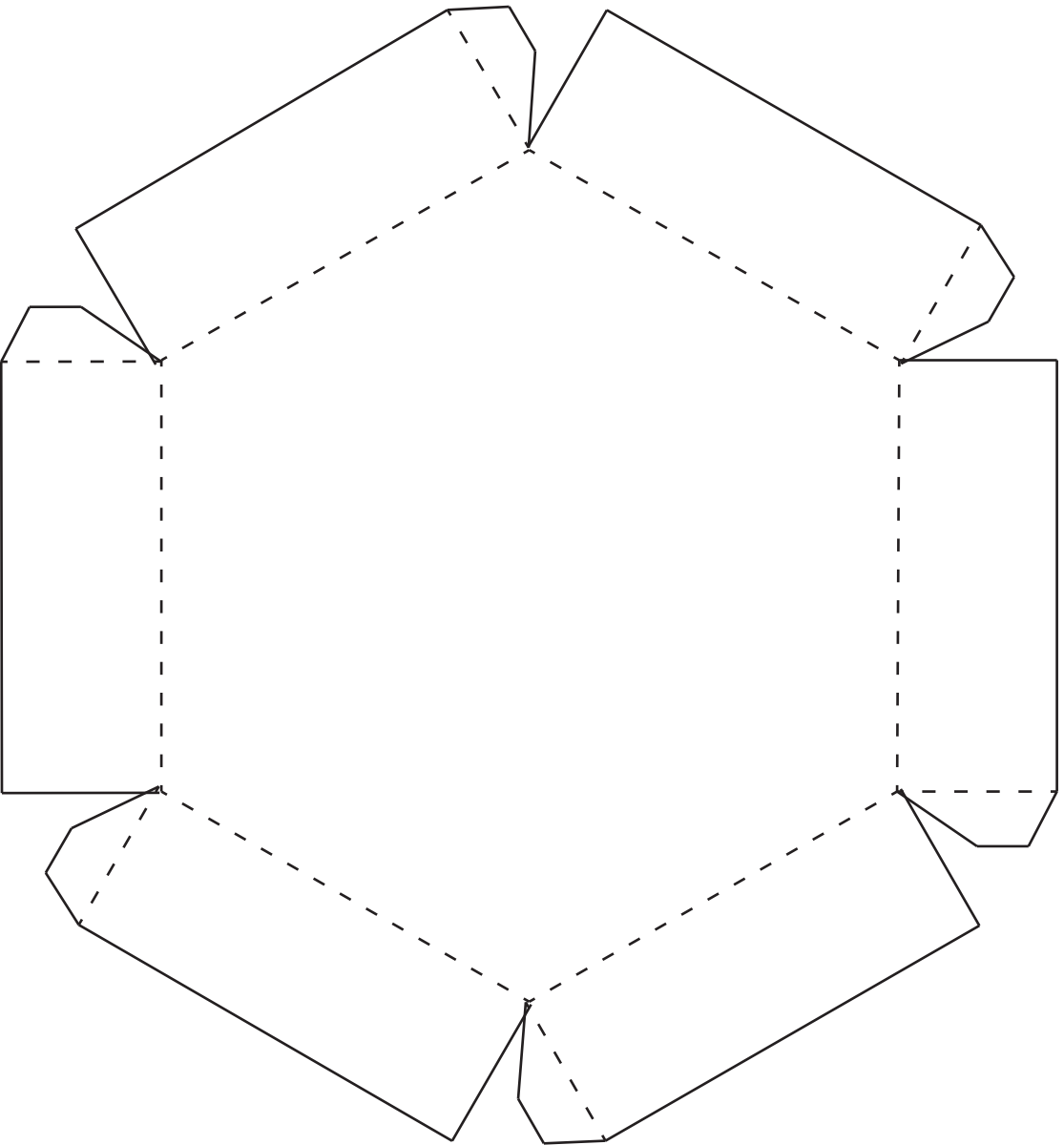




Small Octagon Box Top



Large Octagon Box Bottom



Large Octagon Box Top